



# **Bolton College**

## **Child Protection and Safeguarding Children (Age 0 – 18) Policy 2023-24**



## Contents





- 
- 
- 

4. Key Definitions **h1Bc11e0**

0



## **Emotional Abuse**







**Channel -**



## Operation Encompass

n uD 117.625hrg-7 215610.3 f Df 110 (-]2)Ttt(-yp b D(er)]0 aj 0.4 e(en

•

•

•











**A summary of key External Contacts and Telephone Numbers :-**





- 
- 
- 

## REACT

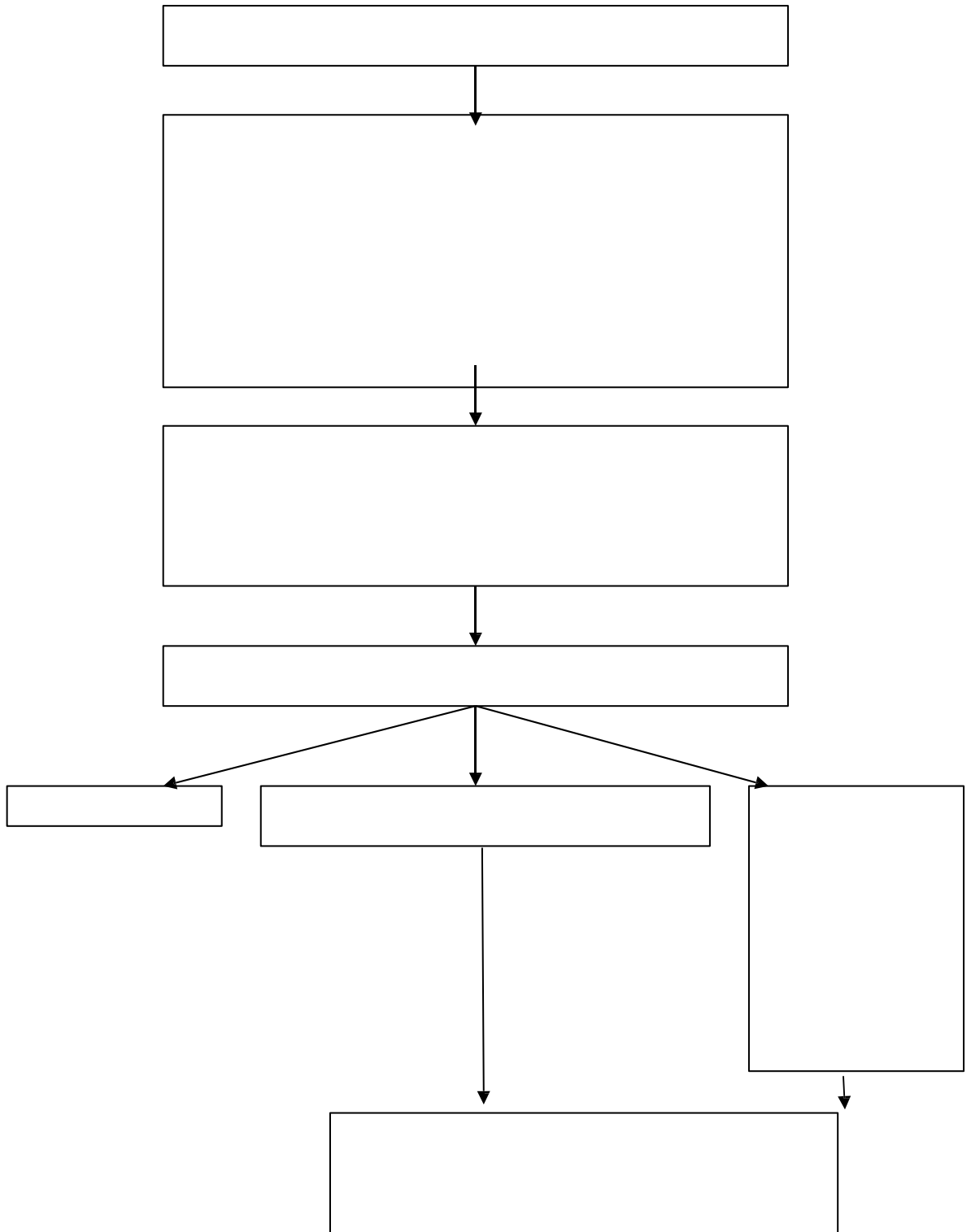
- 
- 
- 
- 
-







**Appendix 4 - Procedure for reporting and dealing with allegations of abuse against a member of staff**





## Appendix 5 -

## Appendix 6 - Other Linked College Policies and Procedures and Legislation

- 
- 
- 
- 
- 
- 
- 
- 
- 
- 
- 
- 
- 

### Relevant legislation

- 
-



- **will be expected**

- **should be aware**

-

## **Appendix 8 – Roles and Responsibilities of Key Staff involved in Child Protection**

### **Responsibilities of Designated (and Deputy) Safeguarding Leads**

-

---

## Contact Points – Bolton College Nursery – Safeguarding

---

---

## The Role and Responsibilities of the Principal

-

## Appendix 9: Body Map

Name of Child : \_\_\_\_\_